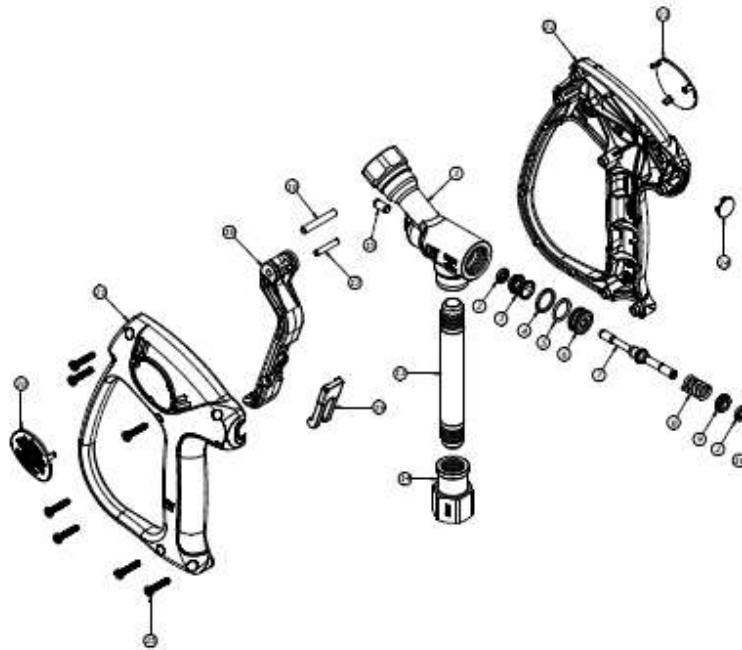


TRIGGER GUN - ML510



P/N	RATED			INLET	OUTLET	BY-PASS	REPAIR KIT
	FLOW	PRESSURE	TEMP				
	lpm	bar	°C				P/N
401330000	60	560	150	1/2 F	1/2 F	-	401990082



Num.	Coefice	Descrizione Complete	Quant	Kit 1	Kit 2	Kit 3
1	00015531	CORPO ML510 INCHILATO 1/2 F	1			
2	00000003	NO SLIPPER NICK 20x15+14-203+OR NBR70	2	x		
3	00000002	DISTANZIALE COMPLETAMENTE ML710	1			
4	AD0011029	A.L. 16, 20x18, 50x3, 70 TEST	1	x		
5	0110750323	GIOR 1.70014 2055 NBR 60 NBR0	1	x		
6	00000045	SPINA ML710	1	x		
7	002400006	STILO ML710	1	x		
8	M00201035	MOLLA 2,2x9, 0x27, 0	1	x		
9	00000001	DISTANZIALE ML710	1			
10	0110750323	GIOR 1.70015, 6 2062 NBR 60 NBR0	1	x		
11	AD0011028	A.L. 16, 20x18, 50x3, 70 TEST	1	x		
12	00000000	RACCORDO ML510	1			
13	T0000045	TUBO INOX 01710 1120MM 03/8	1			
14	00000046	RACCORDO ML510 ENTRATA 1/2 F NBR0	1			
15	P0000000	PERNO INOX 00 OTTONE - ML710	1		x	
16	P0000007	PERNO PER LENA HV925 0.25x3 IN	1		x	
17	P00004005	PERNO PER LENA HV925 0.40x2 INOX	1		x	
18	L0000000	LENA ML710 NBR0	1		x	
19	0100740520	SICURA HV925 - ROSSA -	1		x	
20	T0000007	TARGHETTA ML510 SINISTRA	1			x
21	002001202	SCOCOA ML710 SINISTRA NBR0	1			x
22	002001201	SCOCOA ML710 SINISTRA NBR0	1			x
23	T0000008	TARGHETTA ML510 DESTRA	1			x
24	T0000011	TAPPO SCOCOCHE ML510	1			x
25	0110750040	VITE AUTOF. 4 X 19 UNI 9707	7			x

Kit 1 - KIT RICAMBI ML710 - Cod. 401990082
 Kit 2 - KIT RICAMBI LENA ML710 - Cod. 401990082
 Kit 3 - KIT RICAMBI SCOCOCHE ML510 - Cod. 401990082