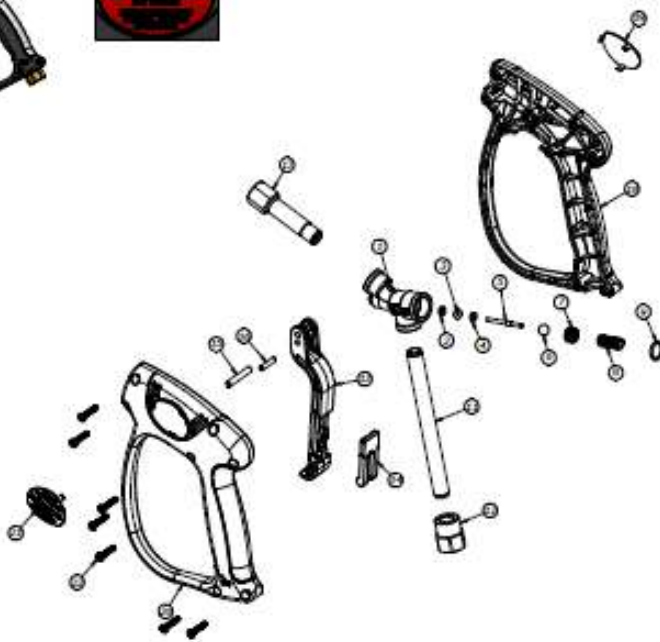


# TRIGGER GUN - ML955



P/N	RATED			INLET	OUTLET	BY-PASS	REPAIR KIT
	FLOW	PRESSURE	TEMP				
	lpm	bar	°C				P/N
4017000006	40	360	150	3/8 F	1/4 F	-	4019900059



Mater.	Codice	Descrizione Completa	Quant.	KIT 1	KIT 2	KIT 3
1	000025029	COILPO ML 955 G 3/4 F OT	1			
2	000117	A.A. 3,00x 7,40x1,30 TB	1			
3	060143	GIUO 2 62X2,64 104 VITON 75 NERO	1			
4	00030014	RONDINELLA 3 1/7 X 1,5 OTTONE	1			
5	00004012	PERNO PERN. ML955-ML955-ML955 IV	1			
6	0112730070	SFERA 11/32 ASSI440 C GR10 ISO 3290	1			
7	0106200040	SIDE M10000 CONGATA CON OR NBR 90	1			
8	0107720030	MOLLA 1,6 X 1,4 X 21,5 INOX	1			
9	0110750003	GIUO 1 70X12,42 2050 NBR 90 NERO	1			
10	0103710060	TAPPO PISTOLA OTTONE	1			
11	T0030000	TUBO L. 130 MM DNOM 1/4 F	1			
12	00000212	RACCORDO ENTR. OTT G 3/8 F	1			
13	00000005	LIVA PISTOLA SF NERA	1			
14	00230007	SICURA PISTOLA MERST ROSSA	1			
15	00000106	PERNO PER LIVA D.5 X 20 DX	1			
16	00000103	PERNO PER LIVA D.4 X 18 DX	1			
17	00000107	RACCORDO USCITA MERST 1/4 F OTTONE	1			
18	00230171	SCOCOA MERST DESTRA NERO-GRIGIO S.T.	1			
19	T0030011	TARGHETTA ML 955 DESTRA ROSSA	1			
20	00230172	SCOCOA MERST SIN. NERO-GRIGIO S.T.	1			
21	T0030010	TARGHETTA M955 SX ROSSA RAL3000	1			
22	0110730010	VITE AUTOP. 4 X 18 LINE 9707	7			

KIT 1 - KIT RICAMBI 9555 (SOLAMENTE PER ML955) - Cod. 4019900059  
 KIT 2 - KIT RICAMBI LIVA MERST SINISTRA - Cod. 4019900060  
 KIT 3 - KIT RICAMBI MERST SCOCOME VITI - Cod. 4019900061

