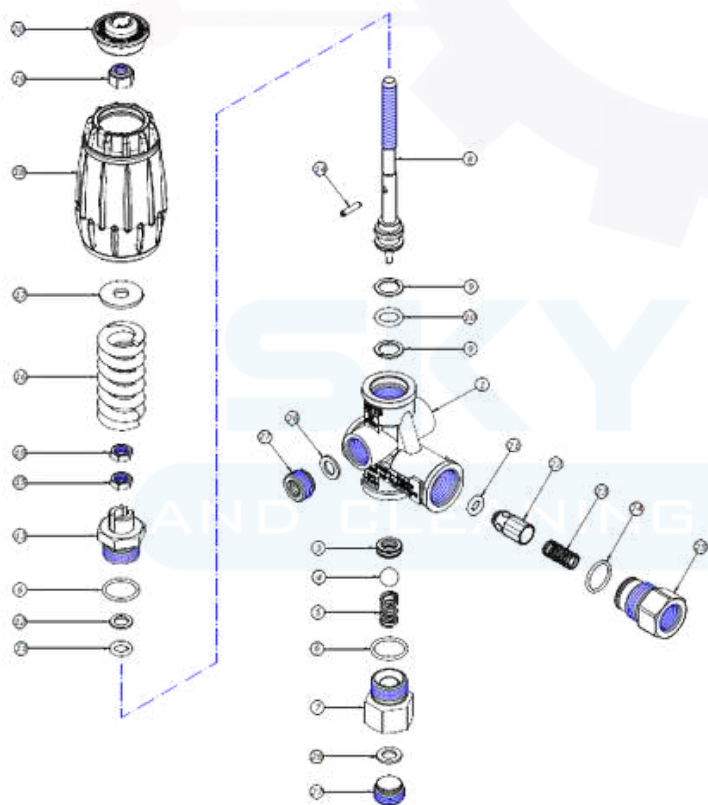


# UNLOADER VALVE - VRT3



P/N	RATED			INLET	OUTLET	BY-PASS	REPAIR KIT
	FLOW	PRESSURE	TEMP				
	lpm	bar	°C				
215010260	40	310	90	3/8 F	3/8 F	3/8 F	4079900005



Num.	Codice	Descrizione Completa	Quant.	KIT
1	0109712650	CORPO VRT3 Ø 3/8 F MV Ø316 01B	2	
3	4079900001	SEDE VRT3 Ø8 CONIATA CON OR NBR 90	2	X
4	0112720010	SPERA DIAM. 13/32 AISI 440C TEMP G20	2	X
5	0107720820	MOLLA SPERA MV Ø316 28	2	
6	0110751311	GLOR 1.78x17.17 2068 NBR 90 NERO	2	X
7	0115712280	RAC.SEDI3/8GF SP13/32 MV Ø316 15A	1	
8	0104720230	STELO VRT3 MV Ø316 04	2	
9	000125	A.A.12,90x15,9x1,20 TB7 000125B	2	X
10	0110750910	GLOR 2.62x10.78 3043 NBR 70 NERO	2	X
11	0110750870	GLOR 2.62x7.6 3030 NBR 70 NERO	2	X
12	0122790030	A.A.8x12,6x1,2 MV Ø316 05	2	X
13	0115712250	RAC.GUADA STELO VRT3 MV Ø316 06	2	
14	0118720120	SPINA ELASTICA LINE ISO 28/48 - 3x14	1	
15	030200	DADO VRT-VMP M 5 x 4 OTT.	2	
16	010770080	MOLLA 5,7x20,7x56 32 MPa MV Ø316 19	1	
17	150204	RONDELLA Ø. 8,5x24,0x2,0 Z.B.	2	
18	400305	MANOPOLA VRT2-VMP ROHS	2	
19	030101	DADO ALTOBLOC.BASSO M8x8 Z.B.	2	
20	0128740090	COPERCHIO MAN.31MPa MV Ø316 22	1	
21	060109	GLOR 3.0x5.0 NBR 90 NERO	2	X
22	0157710040	OTTURATORE VRT3 MV Ø316 07	2	
23	0107720800	MOLLA OTTURATORE VRT3 MV Ø316 08A	2	
24	0110751321	GLOR 1.78x15.6 2062 NBR 90 NERO	2	X
25	0115712260	RACCORDO RITEGNO G3/8 F	2	
26	060200	GUARNIZIONE Ø.24 x8,3x1,5 RAME	2	
27	170101	TAPPO E.L. G3/8 CILINDRICO OTTONE	2	